

Visual Paradigm

Design & Management Tool for Business IT System Development

version 12.2

Release Date: September 23, 2015



Design Software System with UML



Sketch User Interface with Wireframe



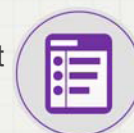
Process Modeling Tools



Use Case Driven Requirements Capturing



Agile Software Development Support - User Story



Task Management



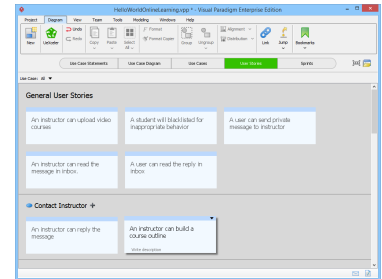
What Visual Paradigm Provides

UML & SysML



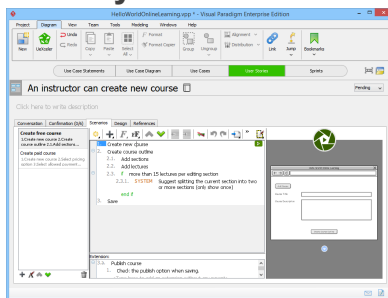
Design quality software with proven modeling languages like UML, SysML, SoAML, etc.

User Story



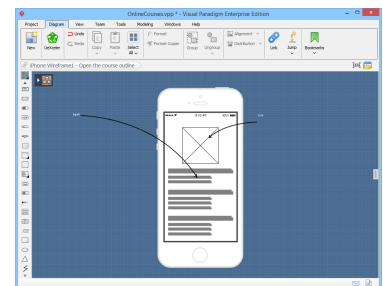
Describe high level user requirements.

User Story Scenario



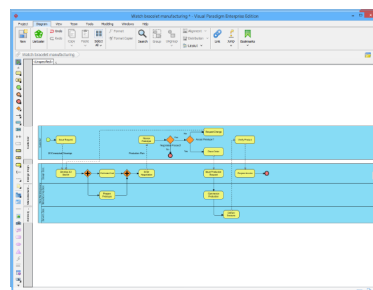
Describe system interaction with user story scenario.

Wireframe



Illustrate user experience with quick and cost-effective wireframe tools. Associate wireframes with flow of events to demonstrate wireframe flow.

Business Process Modeling



Visualize business workflow with BPMN, for analysis, communication, etc

Collaborative Modeling

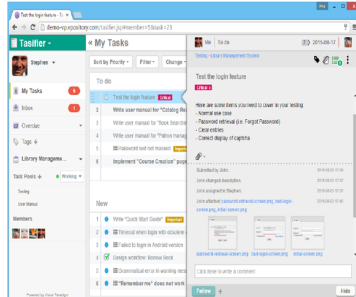


Work as a team, enjoy collaborative and concurrent modeling experience with VPository.com.

Visual Paradigm 12.2

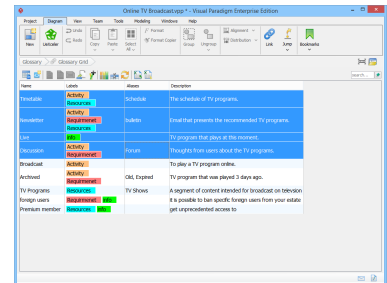
What Visual Paradigm Provides

Task Management



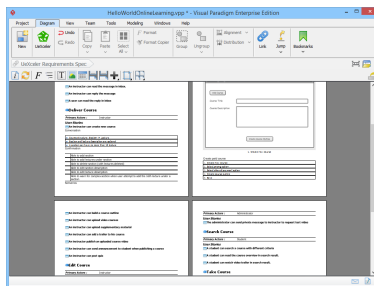
Manage software development activities with management tools designed for software teams.

Glossary Management



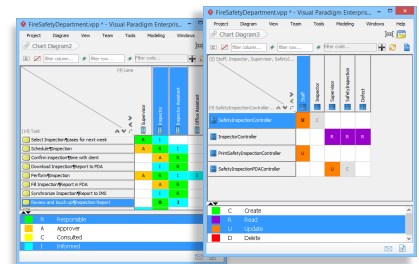
Keep a list of project-related keywords. Define them, label them and add aliases if necessary.

Documentation Generation



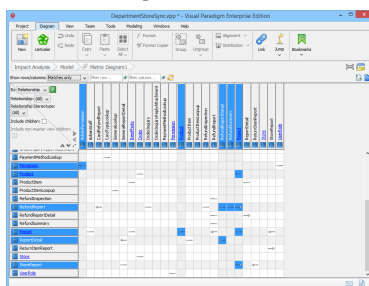
Professional system specifications in MS Word, PDF and HTML format.

RACI & CRUD Chart



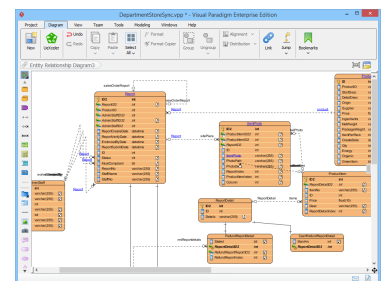
Simple, neat chart tools, best for the representation of responsibilities assignments.

Impact Analysis



Avoid unexpected consequences, inspect your model with matrix and analysis diagram before critical change.

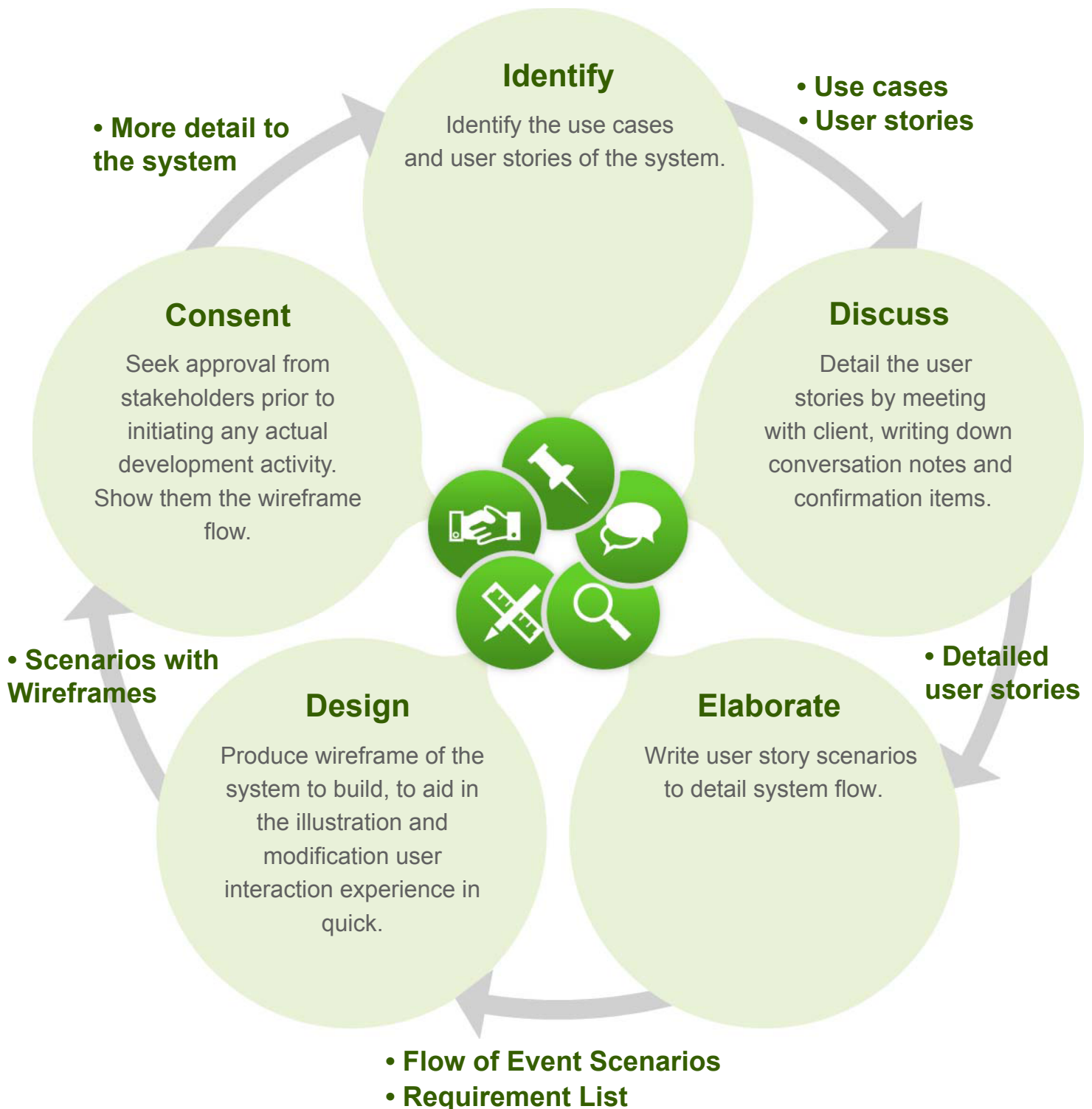
Database Design



Draw ERD to visualize the physical structure of any relational database, regardless of its complexity.

UeXceler

UeXceler is a guideline for software development teams to identify real system requirements at the very beginning of development projects. UeXceler emphasizes the involvement and contribution of stakeholders. Throughout the requirement gathering process, stakeholders are encouraged to express their concerns and needs, which are then converted into use cases, user scenarios and requirements of the solution.



Visual Paradigm 12.2

Compare Visual Paradigm editions



Perpetual License

The license of Visual Paradigm with no expiration date.



Subscription

Subscribe Visual Paradigm in a period of time.

	Enterprise	Professional	Standard	Modeler
Perpetual License	US\$1,399	US\$699	US\$299	US\$99
Subscription	US \$69.0/month	US \$35.0/month	US \$15.0/month	US \$5.0/month

Features	Enterprise	Professional	Standard	Modeler
UML and SysML modeling	✓	✓	✓	✓
Glossary management	✓	✓	✓	✓
Business process modeling	✓	✓	✓	✓
Collaborative modeling	✓	✓	✓	✓
Database generation/reversal	✓	✓	✓	
Advanced modeling toolset	✓	✓	✓	
Document production	✓	✓	✓	
Business modeling	✓	✓	✓	
Requirements capturing	✓	✓		
Wireframe	✓	✓		
Generate requirements specification	✓	✓		
Impact analysis	✓	✓		
SoaML supports	✓	✓		
Design animation	✓	✓		
Task Management	✓	✓		
Enterprise architecture	✓			
Business rule	✓			
Process simulation	✓			

Site License

Enterprise	Professional	Standard	Modeler
US \$130,000.00	US \$67,000.00	US \$28,000.00	US \$10,000.00

All staff in your company or government department (under same email domain name) are entitled to use the product without extra cost.

Volume Discounts

Quantity Ordered	Discount Rate	Enterprise Unit Price	Professional Unit Price	Standard Unit Price	Modeler Unit Price
5 - 9	5%	US \$1,329.0 MAX SAVE US \$630.0	US \$664.0 MAX SAVE US \$315.0	US \$284.0 MAX SAVE US \$135.0	US \$94.0 MAX SAVE US \$45.0
10 - 49	10%	US \$1,259.0 MAX SAVE US \$6,860.0	US \$629.0 MAX SAVE US \$3,430.0	US \$269.0 MAX SAVE US \$1,470.0	US \$89.0 MAX SAVE US \$490.0

Check the complete version from our website
<http://www.visual-paradigm.com/editions/>

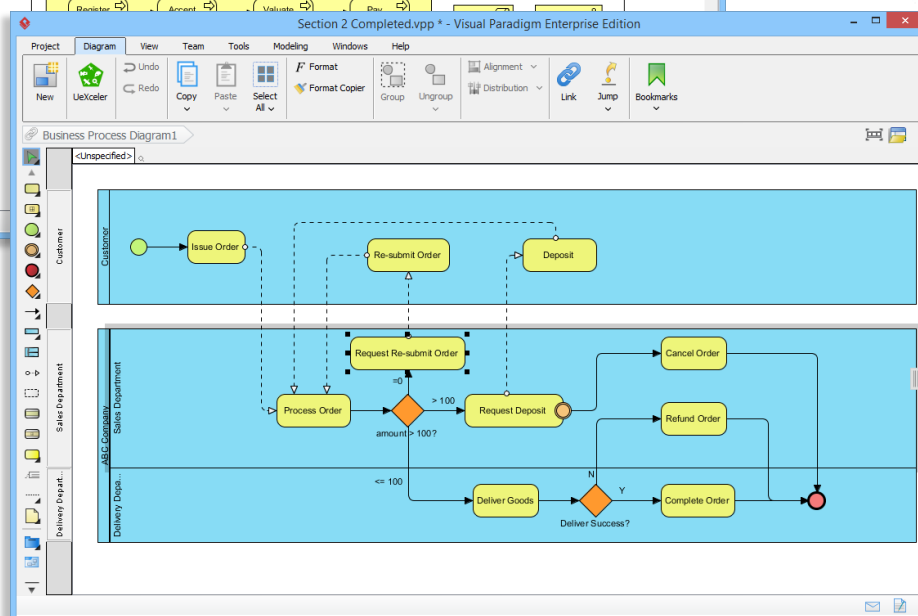
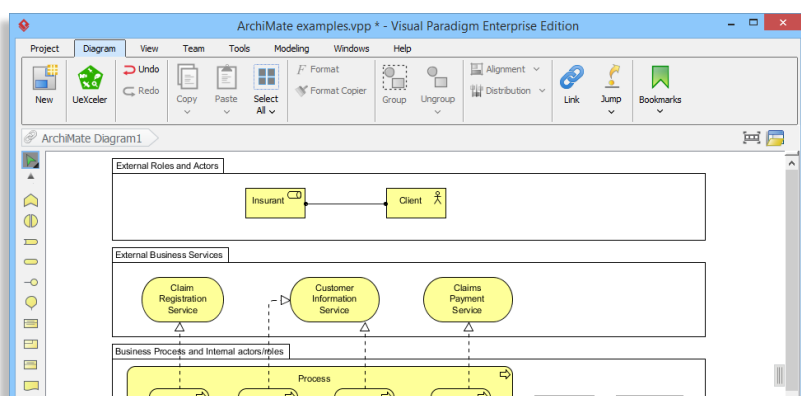
Visual Paradigm 12.2

How to Purchase Visual Paradigm

- Online credit card
- Wire transfer
- Company check
- Authorized resellers

For more information, please visit our online shop
<http://www.visual-paradigm.com/shop/vp.jsp>

ArchiMate Diagram



Business Process Diagram

System Requirements

- Intel Pentium 4 at 2.0 GHz or higher.
- Minimum 512MB RAM, but 1.0 GB is recommended.
- Minimum 1GB disk space.
- Microsoft Windows (XP/2003/Vista/7/8/10), Linux, Mac OS X and Solaris.

Related Products

- Visual Paradigm Teamwork Server
- VPository.com

Award



Visual Paradigm International Ltd.

<http://www.visual-paradigm.com/>

General Information: info@visual-paradigm.com
 Technical Support: support@visual-paradigm.com
 Sales: sales@visual-paradigm.com

For more details about Visual Paradigm, please visit
<http://www.visual-paradigm.com/features/>